

# EXTERNAL PENETRATION TESTING

SECCOM  
GLOBAL  
SERVICES



20  
22

# INTRODUCTION

## External Penetration Test

Using a risk-based approach, Seccom Global's penetration tests will provide your organisation with a broad look at its most critical vulnerabilities and attack vectors.

Based on experience and best practice, our security team will perform a security analysis on the external perimeters of your organisation.

This external penetration test provides a current review of the security posture of your organisation.

Correcting the identified issues will ensure many of the known attack tactics are patched before the organisation experiences a critical breach.



**Based on  
experience and  
best practice, our  
security team  
will perform a  
security analysis  
on the external  
perimeters of your  
organisation.**



# SOLUTION OVERVIEW

## What Are the Risks?

- Even if security patches exist for a system, attackers can utilise the lag time between the identification of the vulnerability and the implementation by an organisation of an associated security patch.
- Attackers are always scanning unpatched systems to exploit vulnerabilities and the global nature of the internet makes it even easier for them to carry on these attacks with utmost impunity.
- Various forms of compliance exist that mandate regular Penetration Testing as a required standard and the risks of not doing anything are widely publicised.

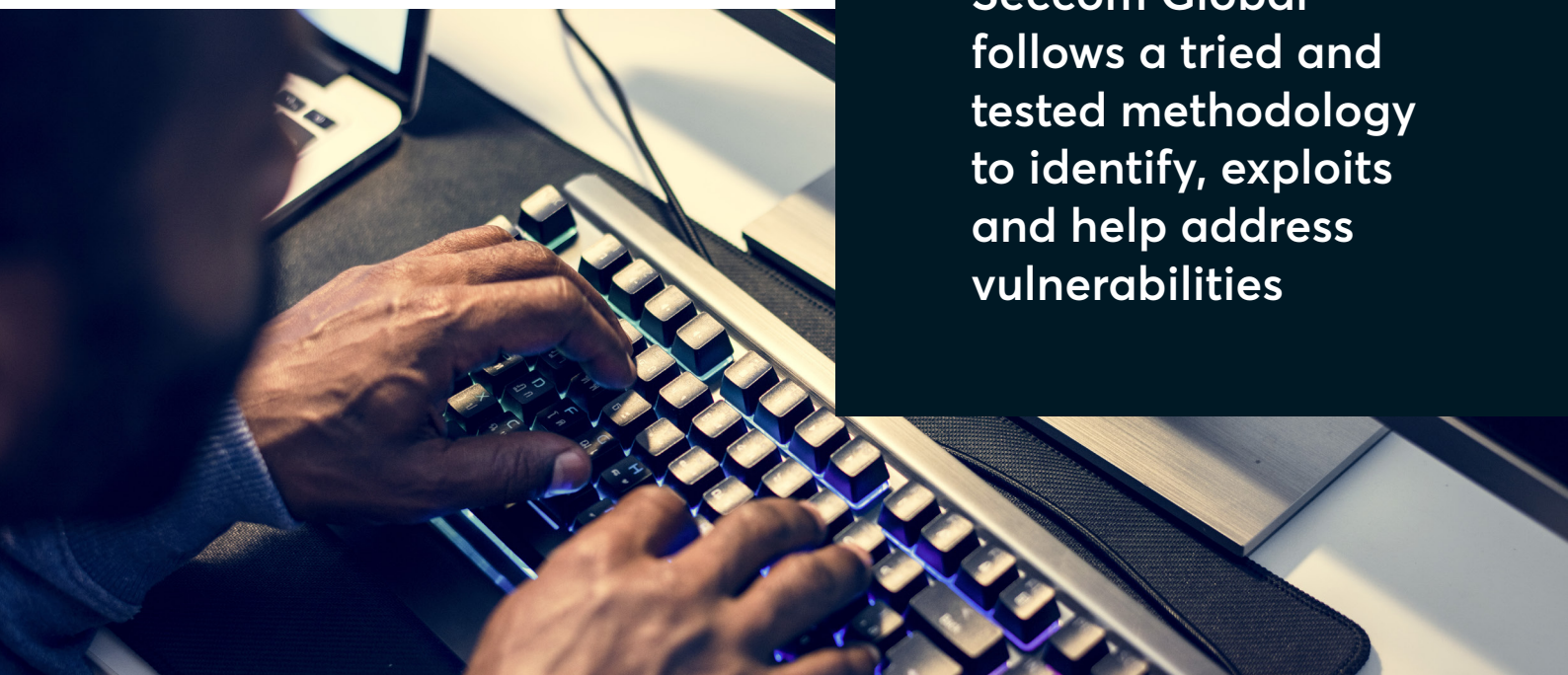
## How Seccom Can Help?

- Identify security gaps by understanding how an external attacker could compromise your and gain access into your network.
- Gain real insight into the potential damage and business risk an attacker could inflict.
- A comprehensive report outlining the security posture of your external network, including high impact recommendations.
- Discover weaknesses in open services or servers through misconfigurations.

Best Practice recommends that each organisation perform an External Penetration Test as part of their regular Security Program in order to ensure the security of their external network defenses.



**Seccom Global  
follows a tried and  
tested methodology  
to identify, exploits  
and help address  
vulnerabilities**



# OUR APPROACH TO PENETRATION TESTING



## SCOPING

Seccom Global's network and infrastructure testing experts work with you to define any network and asset in scope and devise an appropriate assessment strategy.



## ACTIVE SCANNING AND VULNERABILITY ANALYSIS

Using a combination of manual and automated tools, our testers identify security weaknesses and develop a strategy to exploit them.



## EXPLOITATION

Focused on establishing access to a system or resource by bypassing security restrictions. The main focus is to identify external entry points into the organisation and to identify high value asset targets.



## REPORTING

Once a network assessment is complete, our testers document key findings and supply prioritised remediation guidance to help address any identified exposures.

A man with a beard and short brown hair, wearing a dark suit and a light blue shirt, is smiling and shaking hands with another person whose hand is visible. They are standing in front of a building with large windows.

# FAQS

## FREQUENTLY ASKED QUESTIONS ABOUT EXTERNAL PEN TESTING

### **What vulnerabilities are detected by our network pen testing service?**

- Insecure configuration parameters
- Ineffective firewall rules
- Unpatched systems
- Software flaws
- Weak encryption protocols
- Inadequate security controls

### **What is the goal of a external pen test?**

The goal of an external penetration test will depend on the type of activity and compliance requirements of your organisation. Typically they are used to test the current external security posture of your organization, and the ability to successfully detect, respond and stop an outside attacker.

### **What is the difference between internal pen testing and external pen testing?**

An internal pen test is performed within an organisation's network, looking for vulnerabilities from the inside. An external pen test is conducted remotely, with an ethical hacker searching for security vulnerabilities in internet-facing assets such as web, mail and host servers.

Australia  
Philippines  
India  
Singapore

[WWW.SECCOMGLOBAL.COM](http://WWW.SECCOMGLOBAL.COM)

